

NEW

# TriggerBeam Pro

TriggerBeam Pro's impressive 30m range infrared beam can be used to capture images that would normally be extremely difficult or impossible to achieve. Ideal for wildlife, sports, security applications, event photography and much more. Connect to any camera or video devices\*.

**UP TO 30m RANGE**



\* Additional cable/adaptor may be required depending on device/camera, see over leaf for more details.

## Features

The TriggerBeam Pro Kit is a long range infrared beam device that can be used in many photographic or video projects. It is designed to easily capture images using Infrared beam breaking.

A wide variety of cameras and video cameras are supported, including digital and film based. The TriggerBeam Pro can be connected directly to the camera's remote trigger socket or connected to the Triggersmart MCT-1 control unit, offering the ability to tune the sensitivity of the sensors and delay the triggering of the capture device. The TriggerBeam Pro can also support the camera's single exposures or continuous shooting modes, dependent on the camera's settings.

The Infrared beam range is up to 30 meters dependent on lighting conditions. State of the art microprocessor technology is employed which results in the system being able to operate reliably under most lighting conditions without false triggering.

The heart of the system consists of the long range infrared transmitter and receiver. When lined up correctly a narrow beam will travel between the two points. Breaking the beam will cause the camera/Triggersmart to trigger.

The kit includes two Stakepods to mount the transmitter and receiver into the ground or any soft material, weatherproof covers, cables/adapters and a 2 degree baffle to narrow the beam further.



Image: Double Exposure Photography

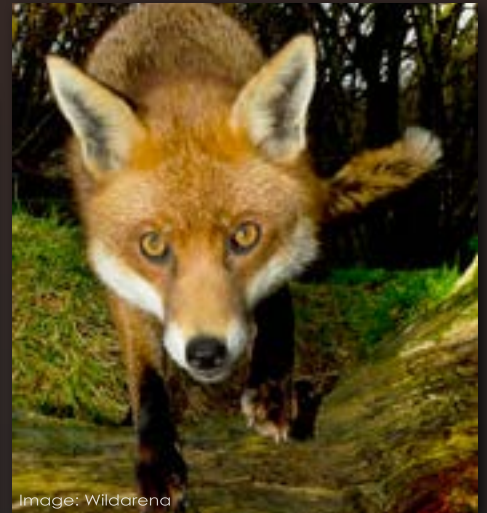


Image: Wildarena



## Easy to setup and use

The TriggerBeam Pro Kit is easy to set up, making it ideal for both beginners and professionals. In the image below you can see a professional photographer's setup of the TriggerBeam Pro. This could also be achieved by mounting the TriggerBeams on tripods.



## The Sweet Spot

By adding a second receiver and transmitter, the user can set up a 'sweet spot'. By doing this with the camera only triggers when both beams are broken. This is our definition of a 'Sweet Spot'.

NOTE: This facility is available when operating in conjunction with the Triggersmart kit or or by adding a second set of TriggerBeam Pro modules. Visit: [www.sabreswitch.co.uk](http://www.sabreswitch.co.uk) for more details.

## Adapter Cables

While the camera trigger cable supplied will fit a wide range of the most popular SLR's, you may need an adapter cable:

### ADAPT-x Camera trigger adapters

ADAPT-A	Canon	ADAPT-F	Sony, Konica, Minolta
ADAPT-B	Nikon	ADAPT-G	Nikon
ADAPT-D	Panasonic, Leica	ADAPT-J	Olympus
ADAPT-E	Olympus	ADAPT-M	Nikon

Go to [www.sabreswitch.co.uk](http://www.sabreswitch.co.uk) and visit the documentation page to find your specific model of camera.

## Features

Range: darkness 30 meter, bright ambient light 20 meters approx.  
Trigger Time: minimum beam break to trigger time 20 ms (1/50 Sec.)  
Trigger delay time: up to 10 ms (1/100 Sec.)  
Infrared transmitter beam: 10 degrees  
Wavelength: 950 nm  
Trigger Outputs: direct to camera or via Triggersmart control unit  
Power: Transmitter 3 x AAA batteries, receiver 2 x AAA or self-powered via Triggersmart  
Operation time: batteries up to 60 hours

## The TriggerBeam Pro Kit

1. Infrared receiver
2. Infrared transmitter
3. 2 x stakepods
4. 2 x weatherproof covers
5. 3m trigger cable 3.5 to 2.5 mm
6. Jack adapter 2.5 to 3.5 mm
7. 2 degrees infrared baffle



Manufactured by

# SabreSwitch

[www.sabreswitch.co.uk](http://www.sabreswitch.co.uk)

Worldwide distribution by  
Flaghead Photographic Limited  
Tel: 044 (0)1202 733123  
Email: [info@flaghead.co.uk](mailto:info@flaghead.co.uk)  
Web: [www.flaghead.co.uk](http://www.flaghead.co.uk)

**FLAGHEAD**  
Photographic

Design credit: [Sally.Berkeley@fiscali.co.uk](mailto:Sally.Berkeley@fiscali.co.uk)